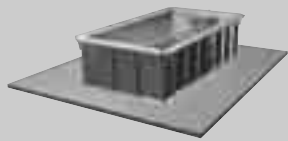


PERMIT CONSIDERATIONS

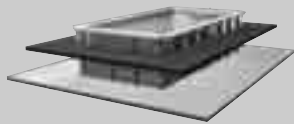


Indoors

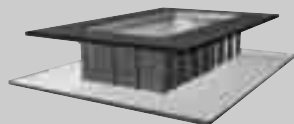
Outdoors



Fully Aboveground Installations



Partially In-Ground Installations



Fully In-Ground Installations

The Endless Pool and Code Requirements

The entire Endless Pool system is ETL listed, Ref. #2001779 and conforms to UL Standard #1563. Individually, all electrical components of the Endless Pool are UL and/or CSA approved. As defined by the International Residential Code (IRC), the Endless Pool is considered an above-ground or an in-ground pool depending on the installation. That is to say, customers can install our Endless Pool Kit above-ground on a garage or basement floor or in the backyard or they can sink it partially or fully in-ground. The unit is completely self-supporting. As required by the IRC the Endless Pool meets all the following standards: ANSI/NSPI Standards #3 (Permanently Installed Residential Spas), #4 (Aboveground/On-ground Residential Swimming Pools), #5 (Residential In-ground Swimming Pools), and #6 (Portable Spas). The appropriate governing standard is dependent on the installation method and the requirements and definitions used by the local governing bodies.

General Description of an Endless Pool

An Endless Pool is a free-standing, steel panel, vinyl lined pool or spa. Filled with water, the standard Endless Pool exerts an evenly distributed load of 200 lbs. per square foot, with a total weight of 10 tons. The water depth of the standard Endless Pool is 39" with 24" above the perimeter return channels, and has a surface area of less than 100 square feet. A current is generated in the pool/spa by a 16" diameter propeller hidden inside a protective stainless steel propulsion housing. The propeller is powered hydraulically so electricity is kept from the pool. The Hydraulic Power Unit can be located up to 75ft from the pool/spa. The water is kept warm and clean using industry standard equipment, including a Circulating Pump, Cartridge Filter, Electric or Gas Heater, and Timer.

Filling and Draining

The standard flat bottom 7'x14' Endless Pool contains 2,500 gallons of water and is typically filled with a garden hose and drained by siphoning through a garden hose or using a bilge or sump pump to pump the water out. The pool or spa is usually partially drained and refilled every three years for programmed service. There is no connection to household plumbing.

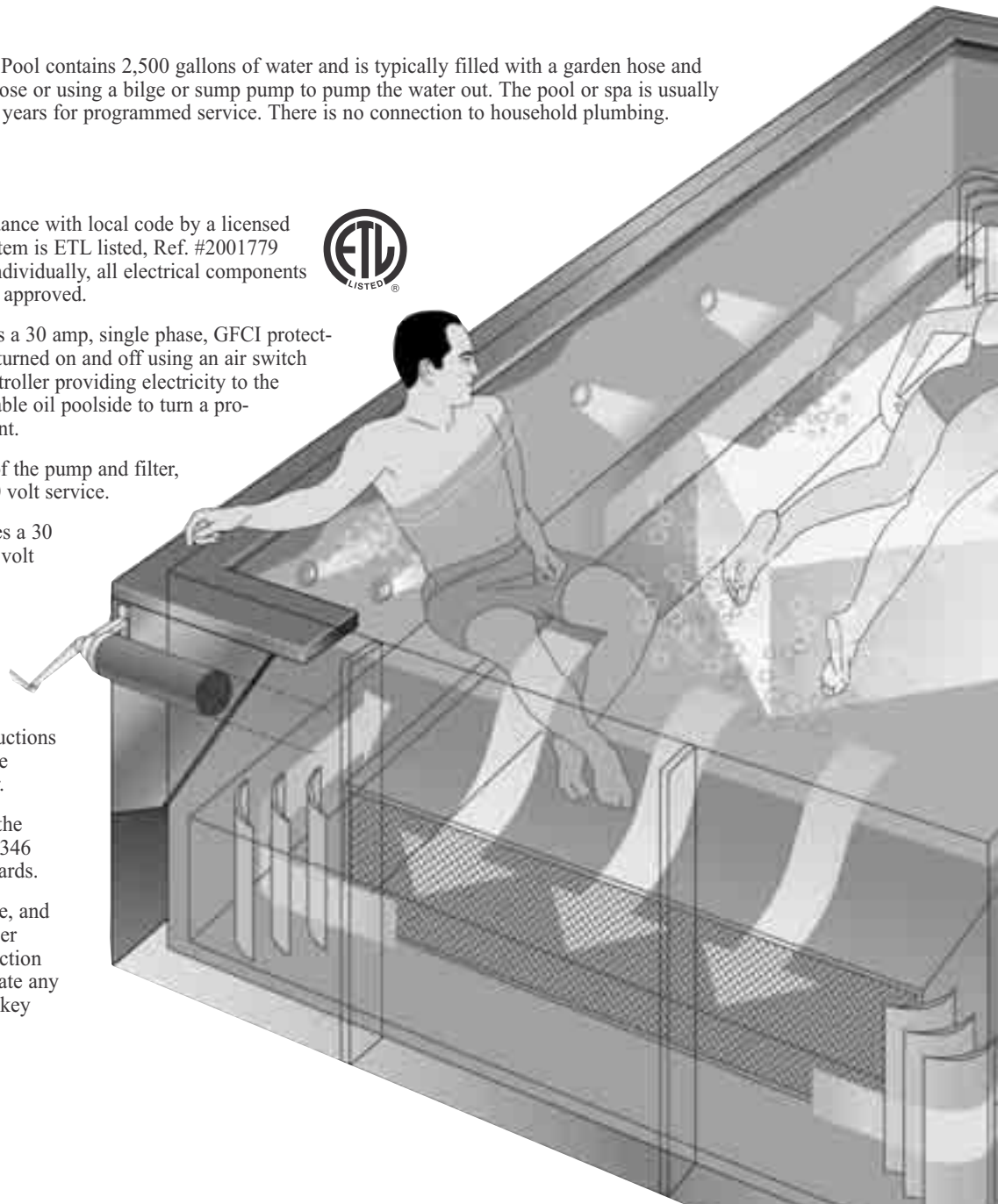
Electric Requirements

- The equipment must be wired in accordance with local code by a licensed electrician. The entire Endless Pool system is ETL listed, Ref. #2001779 and conforms to UL Standard #1563. Individually, all electrical components of the Endless Pool are UL and/or CSA approved.
- The 5HP Hydraulic Power Unit requires a 30 amp, single phase, GFCI protected, 220 volt service. The power unit is turned on and off using an air switch poolside. The air switch activates a controller providing electricity to the power unit, which in turn pumps vegetable oil poolside to turn a propeller and create the smooth even current.
- The Water Quality System, consisting of the pump and filter, requires a 20 AMP, GFCI protected 110 volt service.
- The 5.5 Kw Electric Heater also requires a 30 amp, single phase, GFCI protected 220 volt service. It can share the circuit with the Hydraulic Power Unit or have its own separate circuit.



Safety Considerations

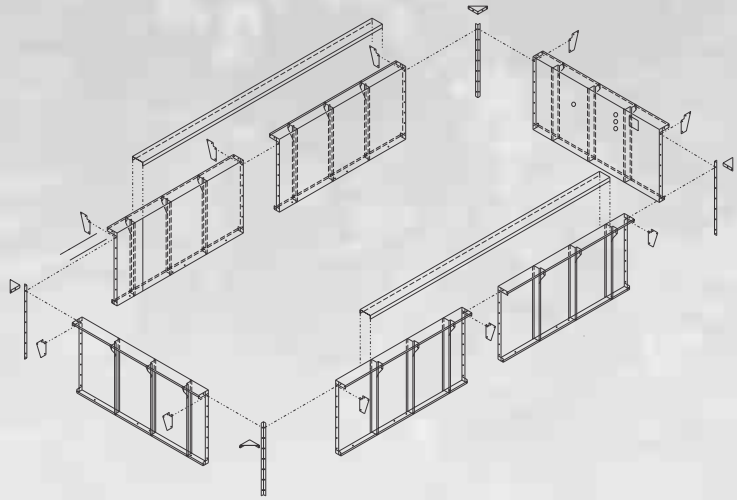
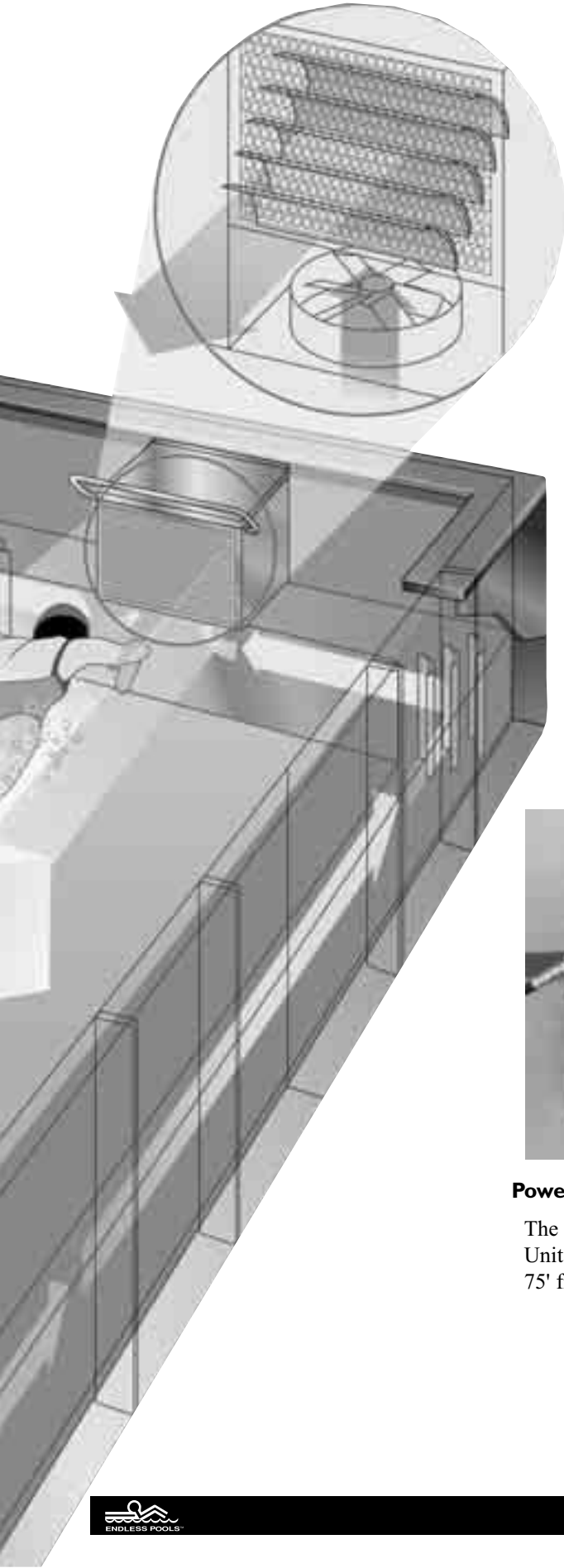
- There are no protrusions or other obstructions in the swimming area, which may cause entrapment or entanglement of the user.
- The safety cover that is available with the Endless Pool complies with ASTM F 1346 as required by the IRC and NSPI standards.
- The skimmer, fitted with a release valve, and a front wall drain inaccessible to the user and fitted with an IAPMO approved suction strainer are plumbed together to eliminate any entrapment hazard. • Entrapment was a key consideration during ETL testing.



Transportability

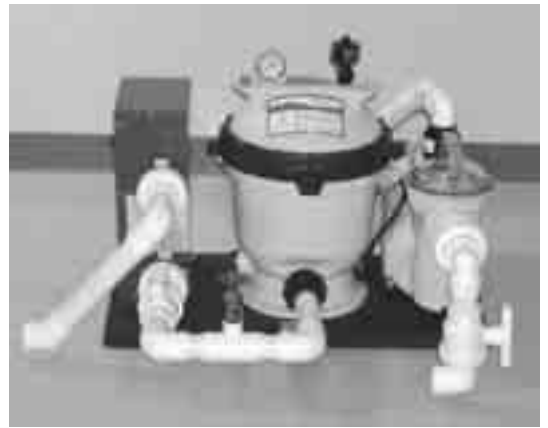
Unlike a standard swimming pool, the Endless Pool can be disassembled and relocated. The Endless Pool is delivered to the job site in kit form for bolt-together assembly. The Endless Pool can be unbolted and moved with the homeowner should they relocate.

Your Endless Pool installation will be classified as a pool or spa based upon your local ordinances, local code office interpretation, and definitions contained in the National Electric Code, Article 680, "Swimming Pools, Fountains, and Similar Installation.", the National Spa and Pool Institute and the International Residential Code.



Power Unit

The 5 hp Hydraulic Power Unit can be located up to 75' from the pool.



Water Filtration

The water is circulated automatically at preset times through a Cartridge Filter and heater. Water sanitizing is typically accomplished by adding small amounts of chlorine.



Endless Pools, Inc. • 200 E. Dutton Mill Rd • Aston, PA 19014-2931
800-732-8660 • 610-497-9328 fax • www.endlesspools.com