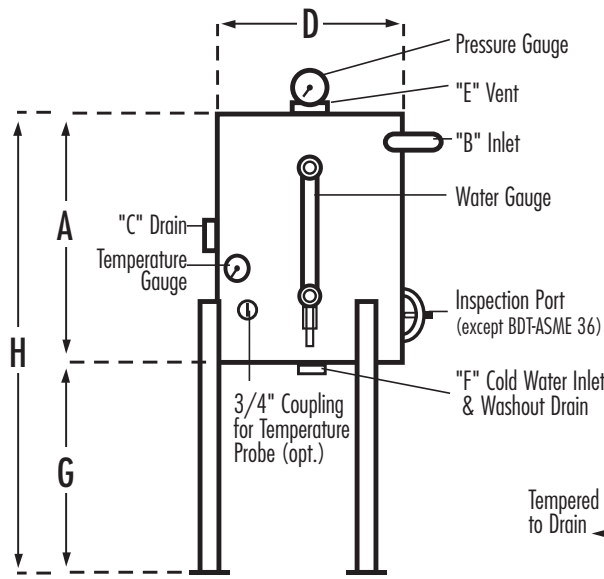


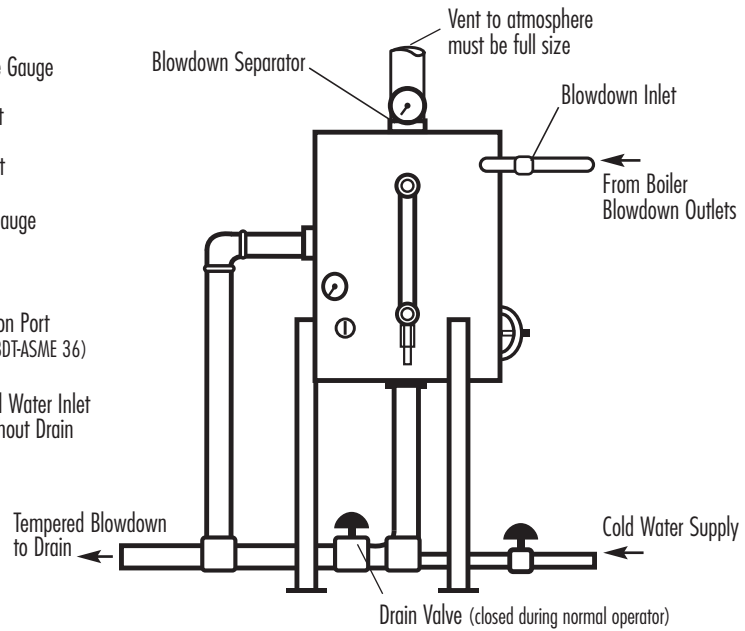
Blowdown Separator Tanks

Model CU-BDT-ASME 36, 42

DIMENSIONS AND FEATURES



SUGGESTED HOOK-UP TO BOILER



| BDT MODEL | CU MODELS | DIMENSIONS | | | | | | | | SHIPPING WEIGHT |
|----------------|-----------------|------------|----|----|-----|--------|----|-----|-----|-----------------|
| | | A | B | C | D | E | F | G | H | |
| CU-BDT-ASME 36 | CU360 - CU2000 | 18" | 1" | 2" | 12" | 2" | 2" | 14" | 32" | 125 |
| CU-BDT-ASME 42 | CU2500 - CU4500 | 24" | 1" | 2" | 18" | 2-1/2" | 2" | 18" | 42" | 230 |

The Mr.Steam Blowdown Separator Tank design incorporates a water seal at the outlet which permits the operator to introduce cold water from the bottom to mix with the hot water and boiler steam blowdown in the separator. This reduces the outlet temperature to a level that makes it safe for discharge.

NOTE: 1BHP is approximately 10KW. All plumbing shall be performed by a qualified, licensed plumber and in accordance with applicable National and local Codes.

Maximum Boiler Working Pressure: 250 psi
 Maximum Blowdown Separator Pressure: 65 psi
 Blowdown Separators are sized in accordance with National Board Standards

Standard Equipment

- 0-100 lb. Pressure Gauge
- 0-200° Temperature Gauge
- Water Level Gauge

Constructed in accordance with Section VII Division I ASME Boiler & Pressure Vessel Code

FOR ILLUSTRATIVE PURPOSES ONLY. IMPORTANT NOTE: FOR SAFE AND TROUBLE FREE INSTALLATION

visit mrsteam.com or scan the QR code before installation to download the Installation, Operation and Maintenance Manual or refer to the manual provided with the unit.



| MODEL | PROJECT INFORMATION | |
|--|---------------------|---------------|
| <input type="checkbox"/> CU-BDT-ASME 36 <input type="checkbox"/> CU-BDT-ASME 42 | Location: | Contractor: |
| | Architect: | Submitted By: |
| | Engineer: | Date: |
| Notes: | | |